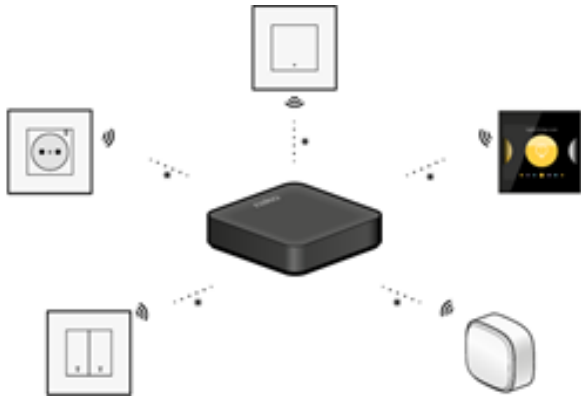
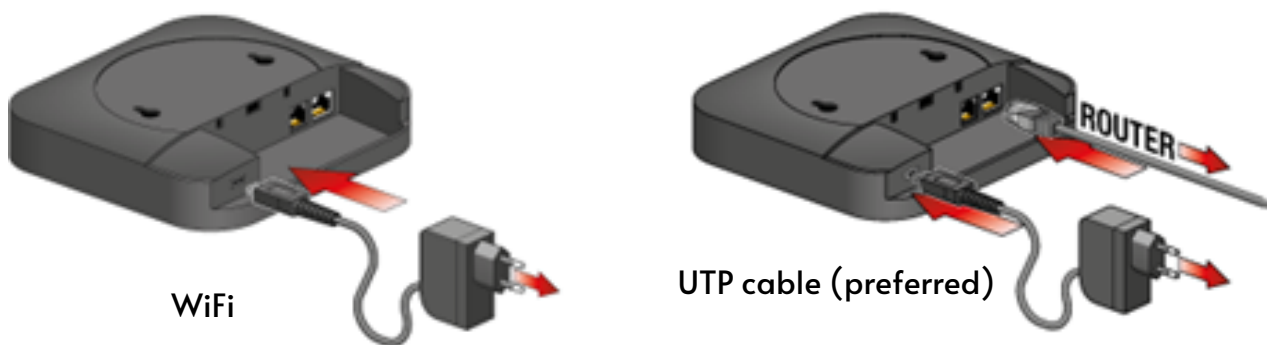


# INSTALLATION GUIDE FOR NIKO SMART HUB

Step 1 - Install all connected and/or wireless Niko devices



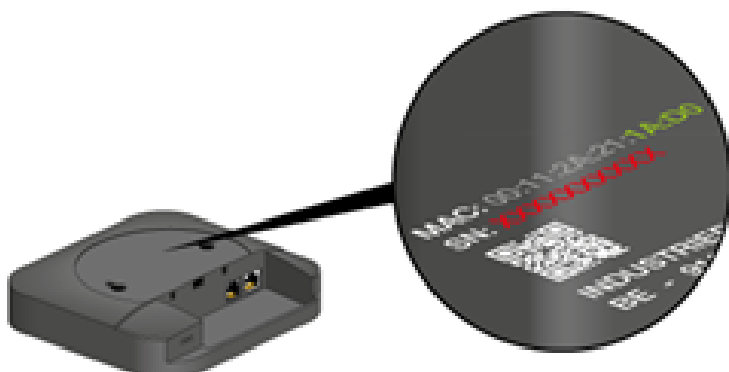
Step 2 - Connect the wireless smart hub via WiFi or UTP cable



Step 3 - If you connected the smart hub via WiFi, connect your mobile device to the following WiFi network.

- network name "Niko" followed by the last 4 characters of the smart hub's MAC address (XX:XX).
- password serial number of the smart hub (SN: XXXXXXXXXX).

RESULT On mobile devices, the smart hub's web portal opens automatically.



**Step 4 - To set the smart hub's network connection, proceed as follows:**

- Open a web browser and go to the address "NikoXX:XX.local" (XXXX = the last 4 characters of the smart hub's MAC address (XX:XX)). (On a mobile device, the smart hub's web portal is already open.
- Enter the password, the password is the smart hub's serial number (SN: XXXXXXXXXXX)

**RESULT:** An overview of all available wireless networks is shown.

- Select your preferred network for the smart hub (if applicable)  
Enter the password for this network.

**RESULT:** The smart hub connects to your own wireless network. The smart hub stops broadcasting its own WiFi network.

To Make changes to the WiFi configuration of the smart hub, restart the smart hub by cutting the power supply for a couple of mins. The smart hub will then transmit its own WiFi network again for 5 mins.

**NEXT**

- Download the Niko Home App.



- Register your smart hub at [mynikohomecontrol.niko.eu](https://mynikohomecontrol.niko.eu).
- Use the MAC address and serial number on the back of the hub
- Log into the app using the email address and password created in the previous step.
- Follow instructions on the Niko Home App

**NB:** To configure your installation, log into the Niko Home App and follow the instructions. As your lock is controlled by a smart lighting switch you need to add the device as a light in the app.

For more information Call 01656 746766